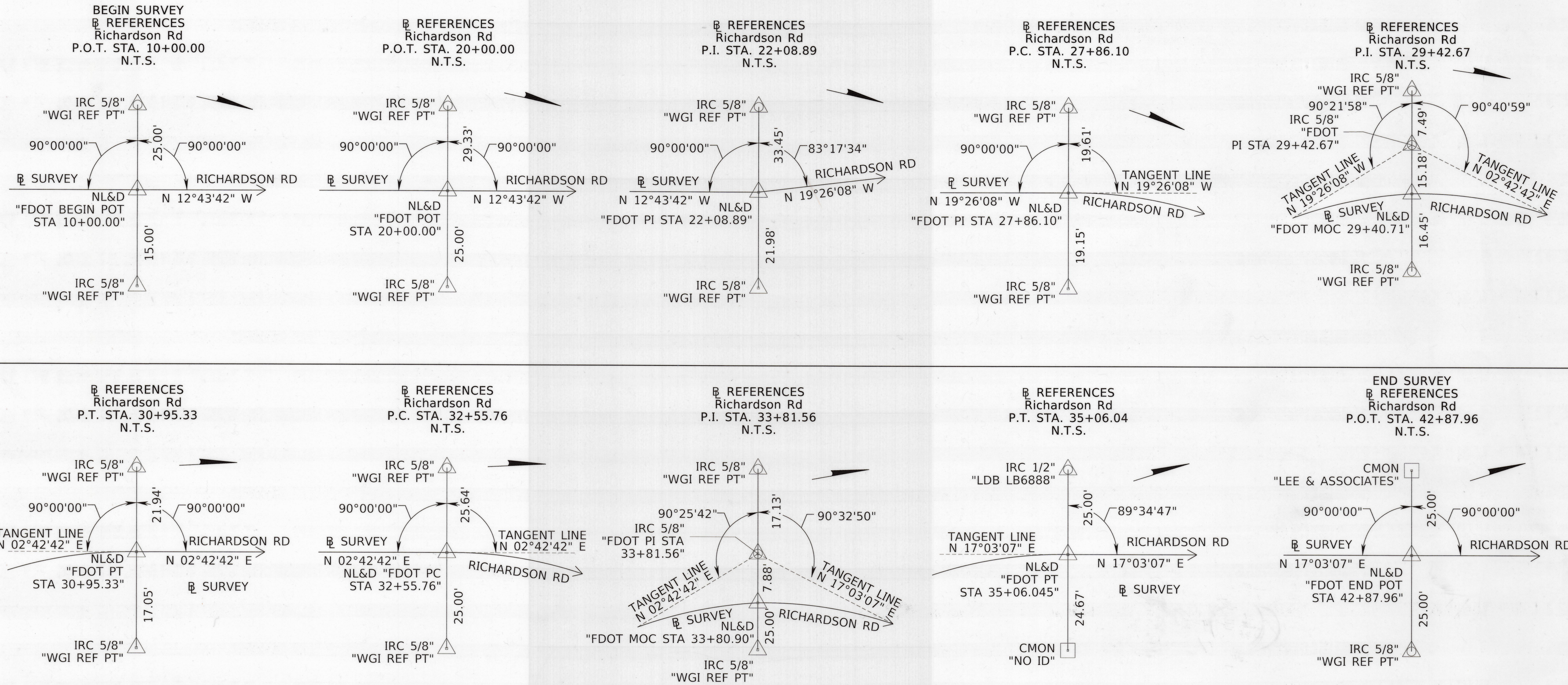


REFERENCE POINTS



STATION	NORTHING (Y)	EASTING (X)	STATION	NORTHING (Y)	EASTING (X)
10+00.00	444178.2920	2678941.1782	30+95.33	446205.8344	2678438.0693
20+00.00	445153.7180	2678720.8500	32+55.76	446366.0814	2678445.6588
22+08.89	445357.4776	2678674.8245	33+81.56	446490.3890	2678459.3750
27+86.10	445901.7888	2678482.7611	35+06.04	446612.0127	2678488.5002
29+42.67	446051.6450	2678445.6780	42+87.96	447359.5580	2678717.7900

- LEGEND**
- △ = 5/8" IRC
 - △ = NAIL & DISK
 - = CONCRETE MONUMENT
 - ALUMN. = ALUMINUM
 - & = AND
 - BS = BASELINE SURVEY
 - IR = IRON ROD
 - IRC = IRON ROD AND CAP
 - MOC = MIDDLE OF CURVE
 - NL&D = NAIL AND DISK
 - N.T.S. = NOT TO SCALE
 - P.C. = POINT OF CURVATURE
 - P.I. = POINT OF INTERSECTION
 - P.O.T. = POINT ON TANGENT
 - P.T. = POINT OF TANGENT
 - S.R. = STATE ROAD
 - STA. = STATION
 - W/ = WITH

PRIMARY HORIZONTAL CONTROL

STAMPING ID	STATION	OFFSET	ELEVATION (Z)	DESCRIPTION	NORTHING (Y)	EASTING (X)	LATITUDE	LONGITUDE
HV1	20+57.61	19.53' RT	120.93'	SET POURED CONCRETE MONUMENT W/ALUMN. DISK STAMPED "FDOT 2700005 HV1"	445214.219	2678727.208	N 30°12'17.86172"	W 82°15'05.37604"
HV2	OFF CHAIN	OFF CHAIN	125.44'	SET POURED CONCRETE MONUMENT W/ALUMN. DISK STAMPED "FDOT 2700005 HV2"	448978.644	2679175.623	N 30°12'55.03011"	W 82°14'59.42005"
C3	OFF CHAIN	OFF CHAIN	123.09'	FOUND POURED CONCRETE MONUMENT W/ALUMN. DISK STAMPED "FDOT 2700003 C3"	438410.500	2682242.820	N 30°11'09.83834"	W 82°14'26.85457"

PRIMARY VERTICAL CONTROL

STAMPING ID	STATION	OFFSET	ELEVATION (Z)	DESCRIPTION	NORTHING (Y)	EASTING (X)	LATITUDE	LONGITUDE
M 714	OFF CHAIN	OFF CHAIN	123.36	FOUND SURVEY DISK IN TOP OF CONCRETE MONUMENT STAMPED "M 714 2009 FLDEP"	450082	2676388	N 30°13'06.5"	W 82°15'31.0"

RICHARSON ROAD OVER SOUTH PRONG ST. MARYS RIVER BRIDGE NO. 274114

MAINTENANCE MAP FOR BAKER COUNTY	FLORIDA DEPARTMENT OF TRANSPORTATION SURVEYING AND MAPPING	REVISION BY DATE REVISION BY DATE REVISION BY DATE	BY DATE PRELIM S. HARP 10/11/2024 FINAL S. HARP 12/18/2024 CHECKED S. DEES 12/18/2024	FED. PROJ. RICHARDSON ROAD	SECTION N/A BAKER COUNTY	MAPS PREPARED BY: WGI INC. 4371 U.S. HIGHWAY 17 SOUTH, SUITE 203, FLEMING ISLAND, FL 32003 PHONE: (904) 470-4503	DATA SOURCE: SURVRD 2700005 SCALE: N.T.S.
		F.P. NO. 4363331		SHEET 6 OF 6			